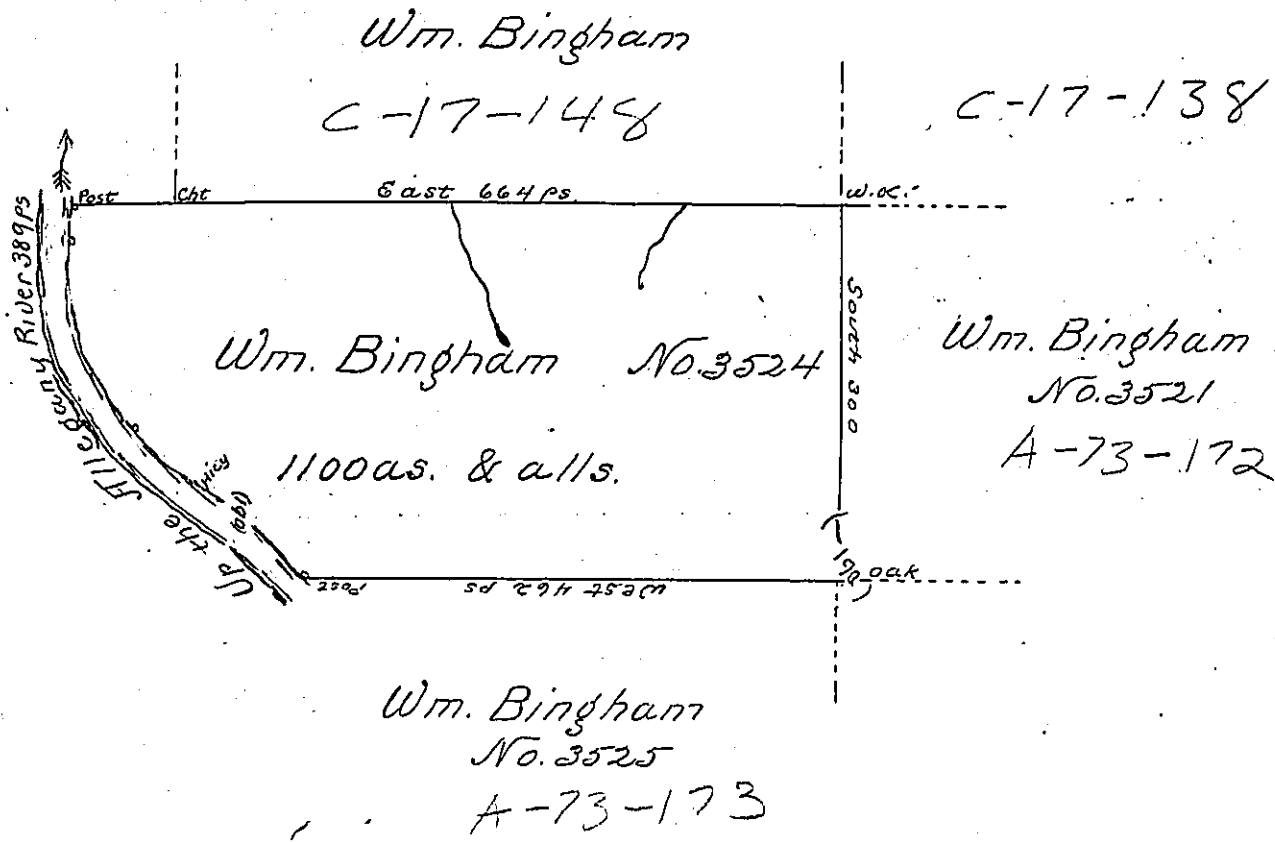


Courses and distances  
down the Allegany River  
from the Post

S. 11. W. 16  
South 48  
S. 23. E. 133  
S. 33. E. 138 Hicy  
S. 42. E. 54  
389



In pursuance of a Warrant N. 3524 dated the 14th day of Decr. 1794 surveyed the 5th day of Augst. 1794 to William Bingham The above described Tract of Land situate on the main Allegany River In the late purchase Northumberland County In Distr (64) No. 6. containing eleven hundred acres & the allowance (o. & c.) per Cent.

p  
Jno. Brodhead Esq.

Daniel Brodhead Esqr.  
Surveyor General

IN TESTIMONY that the above is a copy of the original remaining on file in the Department of Internal Affairs of Pennsylvania, made conformably to an Act of Assembly approved the 16th day of February, 1833, I have hereunto set my Hand and caused the Seal of said Department to be affixed at Harrisburg, this sixth day of August 1901

James W. Little  
Secretary of Internal Affairs.